

SANY[®]

SPECIFICATION



80t



47.5m



67m

STC800T5

SANY TRUCK CRANE

QUALITY CHANGES THE WORLD

www.sanyglobal.com

V1.1

It is one of the core business units in SANY Group, specializing in the development and manufacturing of high-end wheel cranes, crawler cranes and tower cranes, including the complete range of wheel cranes from 8 to 2400t, crawler cranes from 25 to 4500t and tower cranes from 6 to 185t.

三一集团旗下核心事业部，从事高端轮式起重机、履带起重机、塔式起重机系列产品的研发制造。覆盖8-2400吨全吨位轮式起重机，25-4500吨全吨位履带起重机，6-185吨塔式起重机。



SANY CRANE



SANY TRUCK CRANE STC800T5 / 80T LIFTING CAPACITY

Excellent load capacity

性能卓越

47.5m full-extension 5-section large U-shape profile boom, 17.5m jib, max. lifting height 67m and max. lifting moment 2910kN.m.

5 节臂, 大截面 U 型主臂, 主臂全长 47.5m, 副臂全长 17.5m, 最大起吊高度 67m, 最大起重力矩达 2910kN.m。





Double pump intelligent flow distribution system

双泵智能流量分配系统

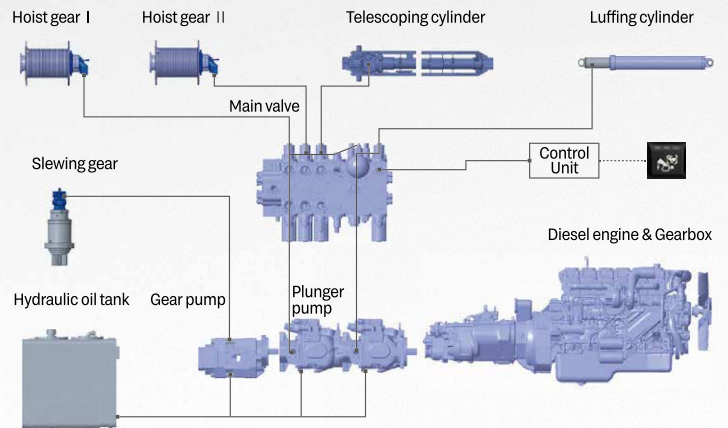
Adopt stable and high quality oil pump, motor and motor, the min. winch single rope speed is less than 1.5m/min, the min. stable slewing speed is less than 0.1°/s, easy to realize mm-level high precision operation.

New double pump intelligent flow distribution system, independent luffing, confluent telescoping, combined motion stability increased by more than 50%.

The electro-hydraulic control system can save 15% energy and also improve the efficiency of heavy load operation by 30%.

采用稳定、高品质的油泵、马达，卷扬单绳最低速度小于 1.5m/min，回转最低稳定小于 0.1°/s，轻松实现毫米级吊装。

全新开发双泵智能流量分配系统，变幅独立，伸臂合流，复合动作平稳性提升 50% 以上。电液复合系统使上车吊装综合节能 15%，重载作业效率提升 30%。



Strong bearing chassis

高承载能力底盘

Brand new 2.8m wide chassis, high-strength rectangular crosssection frame, improving torsion and bending resistance.

WEICHAI high quality engine, 10-speed FAST transmission, FANGSHENG heavy-duty double-reduction axle, the max. gradeability of 52%, fuel consumption 44L per 100 km.

325 large-size steel wire tires, ground clearance > 331mm with good accessibility.

Equipped with 400L large volume fuel reservoir, endurance is close to 1000km.

高承载 2.8m 宽体底盘，高强矩形截面车架，吊载抗弯、抗扭能力强。

东康高品质发动机，法士特 10 档变速箱，方盛高承载双减桥。

最大爬坡度 52%，百公里综合油耗 44L。

325 高承载钢丝胎，离地间隙 > 331mm，通过性好。

配置 400L 大容积燃油箱，续航接近 1000km。

New Generation Cab Capacious, Convenient and Comfortable

搭载全新两室 操作便捷、宽敞舒适



Car Electronic Engineering, L2 drive assistance.
Full LCD instrument, equipped with anti-glare adjustment, able to weaken blue light effect.
Center control 12.1" multimedia entertainment screen, which can be connected with smart phone.
The seat with air suspension, automatic AC.

汽车级 EE 架构, L2 级辅助驾驶。
全液晶仪表, 夜光不同场景设计, 防眩目调校, 弱化蓝光伤害。
中控 12.1 寸多媒体娱乐屏, 手机互联。
气浮座椅, 空调自动控制。

iCab

i-Cab - Driver's cab

新两室 - 下车

Multi-function seat with air suspension, making driving more comfortable.
Double seats and foldable berth for the co-driver.
12.1-inch liquid crystal screen integrated with back-up image and multi-media.
Electric rearview mirror with electric heating, ensuring good field of view in foul weather.
Adjustable high-brightness LED headlamps/fog lamps, providing clear vision at night.
Reversing sensor with accurate distance detection capability, fully covering the parking area without blind spots, and effectively avoiding scratch and collision.
Full-automatic HVAC, able to automatically adjust indoor temperature as demanded.

主驾驶位配备气浮多功能座椅, 驾驶更舒适。
副驾驶位设置双座椅可折叠式卧铺。
12.1 寸液晶触摸大显示屏, 集成倒车影像、影音娱乐功能。
电动、电加热后视镜, 不惧怕恶劣冰雪天气。
高亮度可调节 LED 大灯 / 雾灯, 提供夜间清晰视野。
倒车雷达, 探头后方无死角, 精准探距, 防碰撞。
全自动冷暖空调, 自动根据需求调整室内温度。



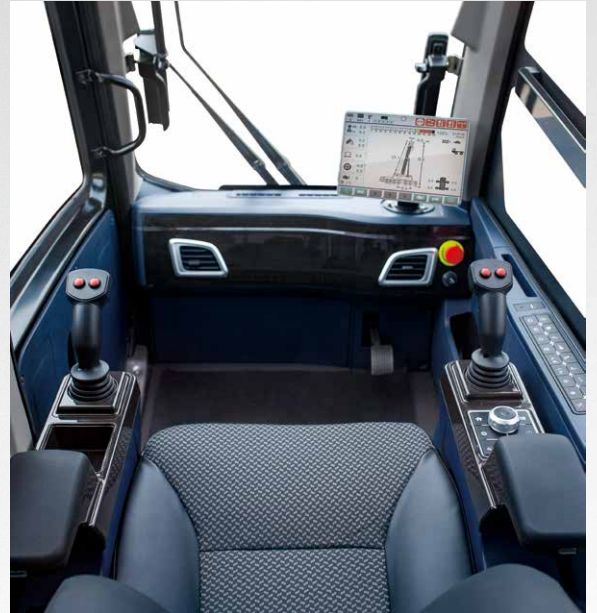
SANY TRUCK CRANE STC800T5 / 80T LIFTING CAPACITY

i-Cab - Operator's cab

新两室 - 上车

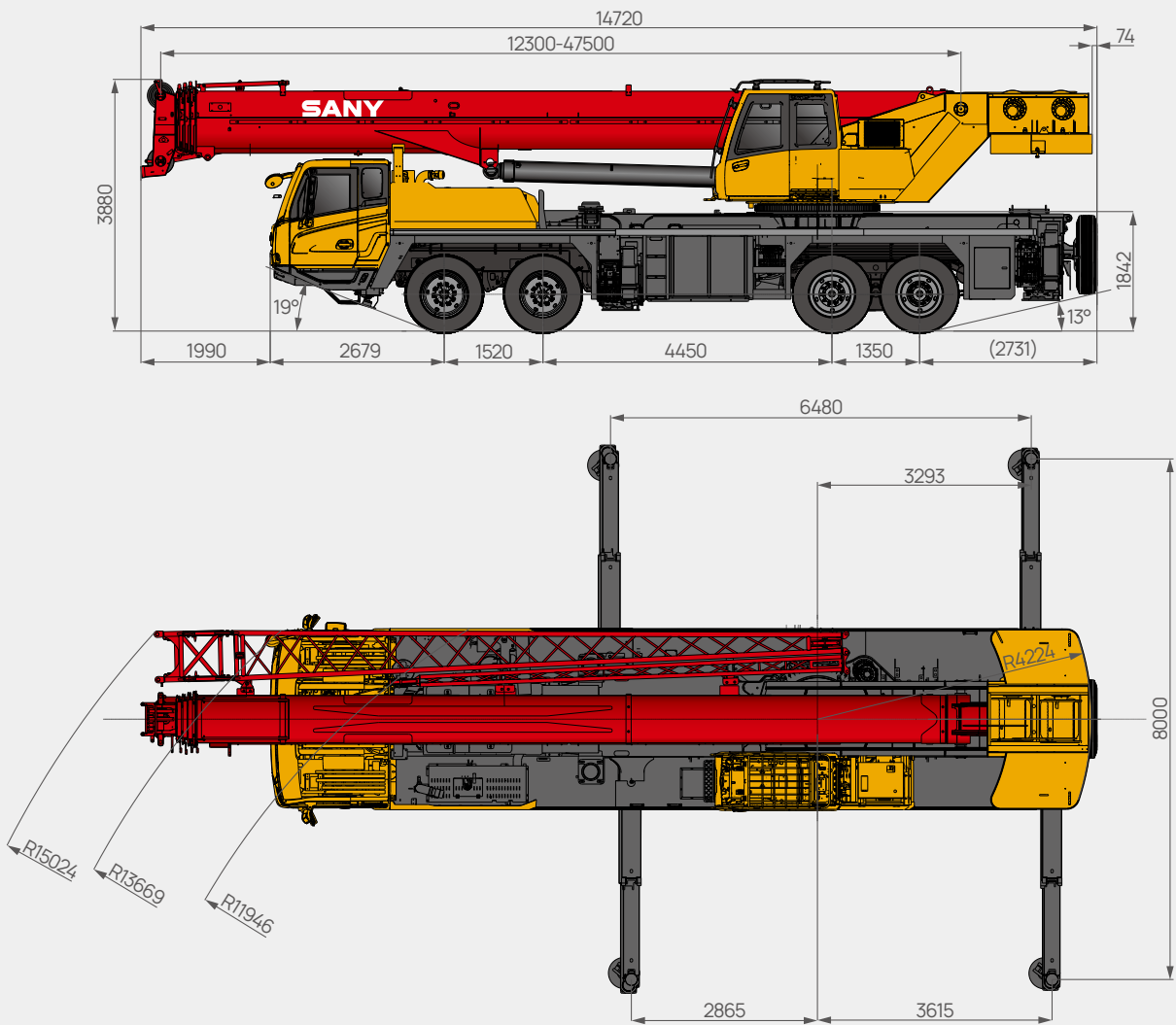
Seat widened by 450mm, and leg room increased by 30%.
 Optional cab tiltable by 0-20°, relieving cervical fatigue during large-angle and long-boom operations.
 Adjustable seat with maximum inclination of 140°, allowing the operator to lie flat and rest after work.
 Electric seat linked with armrest box, enabling multi-dimensional adjustment for enhanced comfort.
 45° tilted silicone button panel, easy to reach and operate.
 Full-automatic HVAC, able to automatically adjust indoor temperature as demanded.

座椅、腿部活动空间较上一代增加 30%。
 操纵室可实现 0-20° 上仰变位,大角度、长臂段作业可减缓颈椎疲劳。
 可调式座椅,最大后仰 140°,操作手可以平躺休息。
 电动座椅 + 扶手箱联动,多维度调节,更加舒适。
 45° 斜置硅胶按键面板,触手可及,方便操控。
 全自动冷暖空调,自动根据需求调整室内温度。



Overall Dimensions

整机尺寸



Technical Specification

整机参数

CATEGORY 类型	ITEM 项目	UNIT 单位	VALUE 参数	
CAPACITY 额定起重量	Max. lifting capacity 最大起重量	t	80	
WEIGHT 重量	Gross weight 整机总质量	t	44.6	
POWER (CHASSIS) 发动机参数 (下车)	Engine model 发动机型号 (排放标准)	-	WP10HG350E670 (BSV)	
	Max. engine power 发动机最大功率	kW/rpm	257/1900	
	Max. engine torque 发动机最大输出扭矩	N·m/rpm	1700/1100~1400	
DIMENSIONS 尺寸参数	Overall length 整机全长	mm	14720	
	Overall width 整机全宽	mm	3880	
	Overall height 整机全高	mm	2800	
TRAVEL 行驶参数	Max. travel speed 最高行驶速度	km/h	50	
	Steering radius 转弯半径	Min. steering radius 最小转弯半径	m	11.9
		Min. steering radius of boom tip 臂头最小转弯半径	m	15.0
	Wheel formula 车轮模式	-	8 × 4 × 4	
	Min. ground clearance 最小离地间隙	mm	331	
	Approach angle 接近角	°	19	
	Departure angle 离去角	°	13	
	Max. gradeability 最大爬坡度	-	52	
	Fuel consumption per 100km 每 100 公里油耗	L	44	
	MAIN PERFORMANCE 主要性能参数	Working temperature range 使用温度区间	°C	-20~+45
Min. rated lifting radius 最小额定幅度		m	3	
Tail slewing radius 转台尾部回转半径		m	4.224	
Boom sections (Qty.) 臂节数		-	5	
Boom shape 臂形状		-	U shape U 型	
Max. lifting moment 最大起重力矩		Basic boom 基本臂	kN·m	2910
		Full-extension boom 全伸主臂	kN·m	1411
		Full-extension boom + jib 全伸主臂 + 副臂	kN·m	414
Boom length 臂长		Basic boom 基本臂	m	12.2
		Full-extension boom 全伸主臂	m	47.5
		Full-extension boom + jib 全伸主臂 + 副臂	m	67
Max. lifting height 最大起重高度		Basic boom 基本臂	m	13.2
		Full-extension boom 全伸主臂	m	48
	Full-extension boom + jib 全伸主臂 + 副臂	m	67	
Outrigger span (Longitudinal × Transverse) 支腿跨距 (纵 × 横)	m	8 × 6.48		
Jib offset 副臂安装角度	°	0, 15, 30		
AIRCONDITIONER 空调	In operator's cab 上车空调	-	Heating 制冷	
	In driver's cab 下车空调	-	Heating 制冷	

Technical Specification

整机参数



Axle Load 轴荷

Axle 轴	1	2	3	4	Gross weight 总重量
Axle load 轴荷 /t	9.8	9.8	12.5	12.5	44.6
Remark 备注	Traveling with jib, main hook and auxiliary hook placed on the frame head, with fixed 3t counterweight. 带副臂、主/副前置、3t配重行驶。				
Axle 轴	1	2	3	4	Gross weight 总重量
Axle load 轴荷 /t	8.5	8.5	16.8	16.8	50.6
Remark 备注	Traveling with jib, main hook and auxiliary hook placed on the frame head, with counterweight=9t (rear 3t + rear 6t). 带副臂、主/副前置、9t配重行驶。				



Hook 吊钩

Rated load 额载 /t	Number of sheaves 滑轮数量	Rope rate 倍率	Hook weight/kg 吊钩重量
6 ●	0	1	120
80 ●	7	14	700

● Standard 标配 ○ Optional 选配



Operations 主要动作参数

Item 项目	Max.single rope lifting speed (empty load) 单绳速度 (空载)	Rope diameter/length 钢丝绳直径 / 长度	Max. single line pull 最大单绳拉力
Main winch 主卷扬	135m/min	18mm/260m	5.84t
Auxiliary winch 副卷扬	135m/min	18mm/145m	5.84t
Slewing speed 回转速度	2.0r/min		
Full luffing up/down time of boom 主臂起落幅时间	70s/90s		
Full extension/retraction time of boom 主臂伸缩时间	90s/110s		
Outrigger jack 垂直支腿	Extension 伸	32s	
	Retraction 缩	30s	
Outrigger beam 水平支腿	Extension 伸	20s	
	Retraction 缩	20s	

Crane Introduction

整机介绍

Driver's cab 驾驶室

- Self-developed integral steel structure cab in ergonomic design, featuring vibration and external noise isolation.
- The cab is furnished in concept of convenience, safety, and comfort with pneumatic seats, seat belt, adjustable steering wheel, large rearview mirror, seat with headrest, demister, AC, 7" multimedia terminal, standard berth, full set of controls and panels.
- More comfortable, safe and sue-friendly.
- 自主开发全宽钢整体式钢结构驾驶室,采用人体工程学原理设计,减震性和封闭性优良。
- 配备气动悬置的驾驶室与副驾座、三点安全带、可调整式的转向盘、大视野后视镜、配有头枕的舒适驾驶椅、防雾扇、冷暖空调、立体收音机等,控制仪器和仪表齐全。
- 更加舒适、安全、人性化。

Carrier frame 车架

- Designed and manufactured by Sany, the box-type structure is expanded in height and length, with its rigidity increased by 10%, featuring increased bearing capacity.
- 三一设计、制造,采用矩形截面结构,车架加高加宽,相较槽型车架,刚性提升10%,承载能力得到大幅提升。

Chassis engine 底盘发动机

- Model: WeiChai Inline six-cylinder diesel engine with watercooler and inter cooler.
- Emission standard: BSV.
- Fuel reservoir capacity: 400L.
- 型式: 潍柴,直列六缸、水冷却、增压中冷、柴油发动机。
- 排放标准: BSV。
- 燃料箱有效容积: 400L。

Transmission 变速箱

- 10-speed manual transmission with synchronizer, large speed ratio range, adaptable to slope climbing and high-speed traveling.
- 手动带同步器变速箱,10档,速比范围大,既可满足低速场地爬坡行驶,又可满足高速行驶。

Transmission shaft 传动轴

- Optimized layout, higher torque output via contrate gear connecting transmission shaft cardan.
- 优化的传动轴布置,传动轴传动平稳、可靠。最优化力传输,采用端面齿联结传动轴,传递扭矩大。

Axle 车桥

- Axles 1 & 2 are steered; axles, 3 & 4 are drive axles with built-in differential lock, realizing tougher ability to rough-terrain travelling. Two-stage reducer gear and smaller sized axle bags make it more flexible. Press welding process strengthens the axle cover.
- 3、4轴为驱动轴,1、2轴为转向轴,驱动轴内置轴间和轮间差速器锁,使车辆有更强的脱困能力;双级减速,桥包体积更小,使车辆有更好的通过性;冲焊桥壳工艺,承载能力更强。

Suspension system 悬挂系统

- Front suspension is realized by independent leaf spring, and rear swing leaf spring. With upgraded strength, the leaf spring is verified by 100,000 cycling fatigue tests, hence ride comfort is out of question.
- 前轴采用独立式钢板弹簧,中后轴采用橡胶悬架系统;板簧经过超过10万次的疲劳试验,保证强度的同时兼顾乘坐的舒适性。

Steering 转向系统

- Axle 1 & 2 are mechanical steering.
- 1、2桥机械式转向机构。

Tires 轮胎

- 325/95R24 popular choice for heavy-duty trucks.
- 子午线轮胎,325/95R24广泛适用于重型汽车,通用性强。

Wheel formula 车轮模式

- 8 × 4 × 4.

Outrigger 支腿

- H-type layout, four point support with high strength steel plate, easy to operate, outrigger beam hydraulically telescoping, jack telescoping protected by two-way holding valve.
- H型支腿4点支撑,易操作、稳定性强;采用细晶粒高强度钢板材料,一、二级支腿全液压横向伸缩。垂直油缸采用双向液压锁进行安全保护。

Brake 制动系统

- The braking system includes service brake, parking brake, emergency braking, assisting brake.
- Service brake: air servo, dual circuit split; wedge brake and double air chambers functioning on front axles.
- Parking brake: functioning at axles 3 and 4 by spring loaded air chamber.
- Emergency brake: performed by accumulator releasing pressure.
- Assisting brake: engine exhaust brake, safety assured when driving down long slopes.
- 制动系统包括行车制动、驻车制动、应急制动和辅助制动。
- 行车制动采用双回路制动系统,所有车轮均用空气伺服制动器,前桥采用模式制动器+双气室,制动能力更强。
- 驻车制动是通过气室内弹簧作用在第三、四桥上。
- 应急制动阀由蓄能器储能断气制动兼做应急制动。
- 辅助制动为排气制动,保证在下长坡时的制动安全,保证行车的安全可靠。

Electrical system 电气系统

- 2*12V maintenance-free battery with a mechanical power switch, the overall power can be cut off manually. CAN instrument, data integration between superstructure and chassis.
- 2 × 12V 免维护蓄电池,配有机械式电源总开关,可手动切断整车电源;总线控制系统,可实现上下车信息交互。

Crane Introduction

整机介绍

Superstructure 上车

Operator's cab 操纵室

- It adopts pressed and welded construction, equipped with safety glass, sun shade, outward opening door, joystick mounted on the control box in line with the principle of man-machine engineering. Corrosion-resistant FRP reinforced structure, fully covered softened interior, panoramic skylight, operator seat back tiltable and other use-friendly design, making it comfortable and easy to operate. Touch screen of adjustable angle realizes multi-screen & multi-angle monitoring to ensure working safety and the oneclick operation. The main control console is combined with the operation display system for convenient man-machine interaction. Cab 20° tiltable, designed for easy observation of load at heights. Cooling & heating A/C available.
- 采用冲压成型的全焊接结构, 装有安全玻璃, 车窗装有遮阳帘, 外开式车门, 操纵杆安装在操纵箱上, 符合人机工程原理; 防腐玻璃钢强化复合结构、全覆盖软化内饰、全景式天窗、操作座椅靠背可倾斜定位等人性化设计, 操作舒适、轻松; 触摸式显示屏, 视角可调节、多画面、多角度监控保证作业安全, 满足一键式操作; 主、塔臂及起卷扬配备监视器, 重点区域集中监视; 主控台与操作显示系统有机结合, 人机交互方便快捷; 操纵室可向上倾斜20°, 满足高处的作业观察需要; 配备冷暖空调。

Boom & telescoping system 伸缩系统

- Five sections of U shape cross section welded by high strength structural steel, telescoping via dual cylinder with rope arranger. 47.5m full-extension boom, 17.5m jib and max. lifting height of full-extension boom + jib 67m.
- 五节臂, 全伸臂长47.5m, 副臂17.5m, 带副臂最大起升高度67m。由高强度焊接结构钢制成, U形截面, 双缸绳排。

Hoist 起升机构

- Efficient and energy saving speed regulation is realized by double variables of pump and motor. Winch balance valve coupled with exclusive anti-slip tech contribute to smoother hoisting.
- Normally closed type winch brake and winch balance valve are set to prevent hook falling and stalling. Standard 7.5t, 90t hook.
- The main winch adopts electric proportional variable motor with good inching performance and stationarity, and can realize infinitely variable speed, non-rotation main wire rope with 18mm diameter and 260m length, non-rotation auxiliary wire rope with 18mm diameter and 145m length.
- 泵、马达双变量调速, 高效节能。卷扬平衡阀与独特的防溜钩技术完美结合, 重物起落平稳。
- 常闭式卷扬制动器, 并设置卷扬平衡阀, 可防止落钩失速;
- 标配6t、80t吊钩。
- 主卷扬采用电比例变量马达, 卷扬微动性、平稳性好, 能实现无级变速。主、副卷扬钢丝绳直径均为18mm, 长度分别为260m, 145m。

Luffing system 变幅系统

- Passive luffing down. Adopting single cylinder and front hinge, it saves more effort in luffing and improves the situation of load of boom, and also uses electric proportional control balance valve. Luffing angle: -1.5°~80°.
- 自重落幅, 更加节能。采用单根油缸, 前铰支布置, 变幅更省力且起重臂受力得到改善; 采用电比例控制平衡阀。变幅角度: -1.5°~80°。

Slewing 回转系统

- Integrated slewing buffer valve with free swing function. Smooth slewing start & control with excellent inching performance.
- 带集成回转缓冲阀, 具有自由滑转功能, 回转启动和控制平稳, 微动性卓越。

Counterweight 配重

- Movable counterweight features 2 combinations: 3t, 9t, See variable CW combination chart.
- 组合式可变平衡重。3t/9t共2种组合方式, 详见附件组合表, 可满足不同工况的需求, 最大限度发挥结构件性能。

Hydraulics 液压系统

- The all new smart double pump flow system lifts maneuverability of combined motions by 50%. The boom can luff at shunting mode and telescope at confluence mode.
- Load sensing variable piston pump can control flow in high precision, reducing energy loss significantly.
- Electrically controlled valve functions flow compensation and load sensing control, securing stable control over single and combined motions.
- Electronically controlled variable motor for winch is of highly efficiency, stability and low noise. Max single rope lifting speed 135m/min.
- 采用全新开发双泵智能流量系统, 变幅独立, 伸臂合流, 复合动作操控性提升50%以上。
- 采用进口负载敏感变量柱塞泵, 能实时调节油泵排量, 实现高精度的流量控制, 极大的降低能量损耗。
- 电控主阀具备流量补偿、负载反馈控制功能, 能在各种工况下, 轻松实现单个动作和组合动作的稳定控制。
- 卷扬采用电控变量马达, 高速效率高, 低速稳定噪音小; 主副卷扬单绳最大速度达135m/min。

Control system 控制系统

- Vehicle data display system: equipped with multiple sensors to give timely feedback of data information, achieving real-time monitoring of the vehicle working state.
- Man-machine interaction interface: more user-friendly interface with rich and clear information. Customers can set the vehicle controllability according to their personal operation habits and different operating conditions to fully meet the preferred needs of customers.
- 整车数据显示系统: 配置丰富的传感器件, 及时反馈数据信息, 实现实时监控, 确保随时掌控整车工作状态。
- 人机交互界面: 人机交互界面设计人性化, 信息丰富而清晰, 客户可根据个人操作习惯和不同使用条件自行设置整车操控性, 充分满足客户的个性化需求。

Safety equipment 安全装置

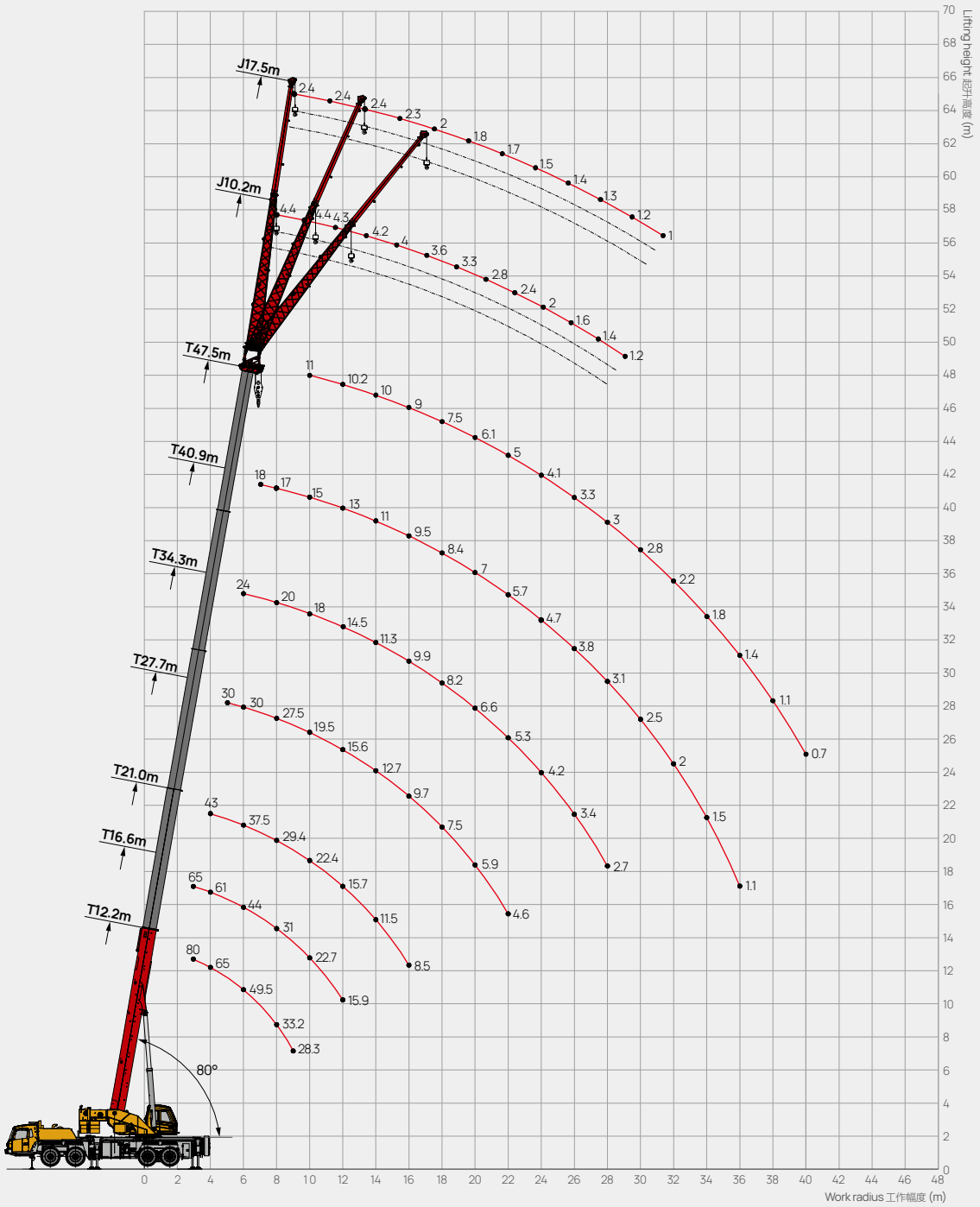
- Load moment indicator: A method of analytical mechanics is adopted and a moment limiter calculation system based on the hoisting mechanics model is established. Through online empty-load calibration, the rated hoisting accuracy can reach $\pm 3\%$ to fully protect the hoisting operation.
- The hydraulic system is equipped with balance valve, relief valve, two-way holding valve, etc. to realize stability and reliability.
- Boom head and jib head are equipped with A2B switch to prevent the wire rope from over winding.
- The boom head is equipped with anemometer to detect whether the wind speed at heights exceeds the allowable range.
- The length & angle sensor and pressure sensor are equipped to display the operating status of the crane in real time, automatically cut off dangerous actions, and give a buzzer alarm.
- 采用分析力学方法, 建立了基于吊重力学模型的力矩限制器计算系统, 通过在线空载标定, 吊重精度达到 $\pm 3\%$ 。
- 液压系统配置液压平衡阀、溢流阀、双向液锁等元件, 实现液压系统稳定可靠。
- 主、副臂臂端配置高度限位器, 防止钢丝绳过卷。
- 臂端装有风速仪, 检测高空风速是否超过可作业允许范围。
- 配置长度角度传感器、压力传感器, 实时显示起重作业状态, 自动切断危险动作, 蜂鸣报警。

Optional equipment at extra fees 选配

- Outrigger pads / Special painting / Other equipment available upon request.
- 支腿垫板 / 特殊涂装 / 其他配置视需求定。

Operating Range

起升高度曲线











Load Chart - Telescopic Boom

性能表 - 主臂



Unit: kg

	12.2	18.8	25.5	32.1	38.7	45.3	51.9	58.5	65.1	71.7	78.3	84.9	91.5	98.1	104.7	
3	80000*					65000										3
3.5	75000					63000										3.5
4	65000					61000					43000					4
4.5	64000					60000					43000					4.5
5	57000	30000	29000			54000	30000				41000	30000				5
5.5	53000	30000	28000			50000	30000				40000	30000				5.5
6	49500	30000	27000	21000		44000	30000	27000			37500	30000	24000			6
6.5	45000	30000	26000	20000		42000	30000	26000			35500	29000	23000			6.5
7	41800	30000	25000	19000		38000	30000	25500	19000		34000	28500	22000	18000		7
7.5	35100	29500	24000	18500		33000	29500	25000	18500		31500	28000	21000	17500		7.5
8	33200	29000	23500	18000	14000	31000	29000	24500	18000		29400	27500	20000	17000		8
9	28300	25000	22000	16500	13000	27900	24200	24000	17000	12000	26100	23500	19000	16000		9
10		20500	20500	15000	12000	22700	20000	19700	16000	11500	22400	19500	18000	15000	11000	10
11		17200	18000	14000	11500	18900	16700	17300	14500	11000	18600	17100	16500	14000	10500	11
12		14700	15400	13000	11000	15900	14200	14800	14000	10700	15700	15600	14500	13000	10200	12
14		11200	11800	11500	9600		11600	12600	11900	10000	11500	12700	11300	11000	10000	14
16			10300	9500	8700		9100	10800	10400	9500	8500	9700	9900	9500	9000	16
18			9100	8000	8000		7900	8600	9100	7600		7500	8200	8400	7500	18
20			7500	7200	6600			7000	7400	6600		5900	6600	7000	6100	20
22				6500	6000			5700	6100	5900		4600	5300	5700	5000	22
24				5500	5500			4600	5000	5300			4200	4700	4100	24
26				4600	4900				4200	4400			3400	3800	3300	26
28					4100				3400	3700			2700	3100	3000	28
30					3500				2800	3100				2500	2800	30
32					3000					2600				2000	2200	32
34					2500					2100				1500	1800	34
36														1100	1400	36
38															1100	38
40															700	40
42																42
44																44
	14	6	5	4	3	12	6	5	4	3	8	6	5	4	3	
	0	0	0	0	0	50	50	50	50	50	100	100	100	100	100	
	0	25	50	75	100	0	25	50	75	100	0	25	50	75	100	









* Need additional pulley.
* 需要增加附加滑轮

Load Chart - Telescopic Boom

性能表 - 主臂

Unit: kg



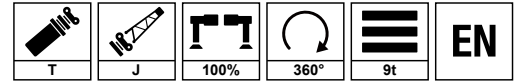
 m	12.2	18.8	25.5	32.1	38.7	45.3	51.9	58.5	65.1	71.7	78.3	84.9	91.5	98.1	104.7	 m
3	80000*					65000										3
3.5	75000					63000										3.5
4	65000					61000					43000					4
4.5	64000					60000					43000					4.5
5	57000	30000	29000			54000	30000				41000	30000				5
5.5	53000	30000	28000			50000	30000				40000	30000				5.5
6	49500	30000	27000	21000		44000	30000	27000			37500	30000	24000			6
6.5	45000	30000	26000	20000		42000	30000	26000			35500	29000	23000			6.5
7	38400	30000	25000	19000		37800	30000	25500	19000		34000	28500	22000	18000		7
7.5	32900	29500	24000	18500		32400	29500	25000	18500		31500	28000	21000	17500		7.5
8	28600	29000	23500	18000	14000	28100	29000	24500	18000		27800	27500	20000	17000		8
9	22300	24400	22000	16500	13000	21900	23600	24000	17000	12000	21600	23100	19000	16000		9
10		19900	20500	15000	12000	17600	19200	19700	16000	11500	17300	18700	18000	15000	11000	10
11		16600	17400	14000	11500	14400	16000	16800	14500	11000	14100	15500	16300	14000	10500	11
12		14000	14800	13000	11000	11800	13400	14200	14000	10700	11500	12900	13700	13000	10200	12
14		10200	11000	11400	9600		9600	10400	10900	10000	7900	9200	10000	10500	10000	14
16			8400	8900	8700		7100	7900	8300	8700	5500	6700	7500	7900	8300	16
18			6600	7000	7300		5300	6100	6500	6800		5000	5700	6100	6500	18
20			5200	5600	5900			4700	5100	5400		3600	4300	4800	5100	20
22				4600	4800			3700	4100	4400		2600	3300	3700	4000	22
24				3700	3900			2800	3200	3500			2400	2900	3200	24
26				3000	3200				2500	2800			1700	2200	2500	26
28					2600				1900	2200			1200	1600	1900	28
30					2100				1500	1700				1100	1400	30
32					1700					1300				700	1000	32
34					1300					900						34
36																36
38																38
40																40
42																42
44																44
 n	14	6	5	4	3	12	6	5	4	3	8	6	5	4	3	 n
 %	0	0	0	0	0	50	50	50	50	50	100	100	100	100	100	 %
 %	0	25	50	75	100	0	25	50	75	100	0	25	50	75	100	 %

* Need additional pulley.
* 需要增加附加滑轮

Load Chart-Fixed Jib

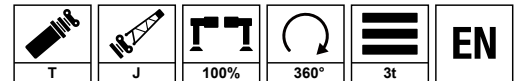
性能表 - 副臂

Unit: kg



	47.5m+10.2m			47.5m+17.5m			
	0°	15°	30°	0°	15°	30°	
80.0	4400	3800	3300	2400	2000	1400	80.0
78.0	4400	3700	3100	2400	1900	1300	78.0
76.0	4300	3600	2800	2400	1800	1300	76.0
74.0	4200	3500	2700	2300	1700	1200	74.0
72.0	4000	3300	2500	2000	1600	1200	72.0
70.0	3600	3100	2400	1800	1500	1100	70.0
68.0	3300	2800	2300	1700	1400	1100	68.0
66.0	2800	2600	2200	1500	1300	1000	66.0
64.0	2400	2300	2100	1400	1200	900	64.0
62.0	2000	2000	1900	1300	1100	900	62.0
60.0	1600	1600	1500	1200	1000	900	60.0
58.0	1400	1400	1300	1000	900	900	58.0
56.0	1200	1100	1000				56.0

Unit: kg



	47.5m+10.2m			47.5m+17.5m			
	0°	15°	30°	0°	15°	30°	
80.0	4400	3800	3300	2400	2000	1400	80.0
78.0	4400	3700	3100	2400	1900	1300	78.0
76.0	4300	3600	2800	2400	1800	1300	76.0
74.0	4200	3500	2700	2300	1700	1200	74.0
72.0	4000	3300	2500	2000	1600	1200	72.0
70.0	3600	3000	2400	1800	1500	1100	70.0
68.0	3300	2700	2300	1700	1400	1100	68.0
66.0	2800	2400	2100	1500	1200	1000	66.0
64.0	2300	2100	1900	1400	1000	900	64.0
62.0	1800	1600	1500	1200	1000		62.0
60.0	1400	1300	1200	1100	900		60.0
58.0	1100	1000	900	800			58.0

Remark:

- Value listed are the max. capacity when the crane is in a level condition on solid ground or surface.
- Radius refers to actual radius with boom deflection considered.
- Value above are calculated with hooks and lifting slings considered (550kg main hook block, 120kg aux. hook block).
- When the fifth outrigger is landed in position, value listed are applicable for 360 degree operation.
- Rated lifting performance on boom point sheave equals 5000kg; boom load capacity shall be 2300kg less than value given when jib unfolds.
- Load value is given according to the larger radius or boom length value when the actual radius or boom length falls between two numbers above.

备注:

- 起重性能表中给定数值是在平整坚固的地面上，整机调平状态下起重机的额定起重量。
- 起重性能表中工作幅度是指吊载后的实际幅度。
- 起重性能表中额定起重量包括起重钩（主起重钩重 700kg，副起重钩重 120kg）和吊具的重量。
- 打开好第五支腿时，表中数值适用于全方位（360°）作业。
- 使用臂尖滑轮时额定起重量不超过 5000kg。若副起重臂处于展开状态，主臂起吊的额定起重量应减少 2300kg。
- 如果实际臂长和幅度介于两个数值之间时，取较长的臂长及较大的幅度所决定的额定起重量进行起吊作业。



SANY GROUP CRANE BU

SANY Mobile Crane Industrial Park, No.168 Jinzhou Avenue, Jinzhou Development Zone, Changsha City,
Hunan Province, P.R. China Zip 410600
Consulting sanycrane@sanygroup.com (Crane BU) / crd@sany.com.cn (IHQ)
After-sales Service 0086-400 6098 318

Reminder:

Any change in the technical parameters and configuration due to product modification or upgrade may occur without prior notice.
The machine in the picture may include additional equipment. This brochure is for reference only, and goods in kind shall prevail.
Copyright at SANY. No part of this brochure may be copied or used for any purpose without written approval from SANY.

© Edited in February 2024

三一集团起重事业部

中国湖南长沙金洲开发区金洲大道 168 号 三一汽车起重机产业园 邮编: 410600
咨询: sanycrane@sanygroup.com (起重事业部) / crd@sany.com.cn (国际总部)
海外售后服务: 0086-400 6098 318

温馨提示:

由于技术不断更新, 技术参数及配置如有更改, 恕不另行通知。图中机器可能包括附加设备, 本画册仅供参考, 以实物为准。
版权为三一所有, 未经三一书面许可, 本画册任何内容不得被复制用于任何目的。

© 2024 年 2 月版

